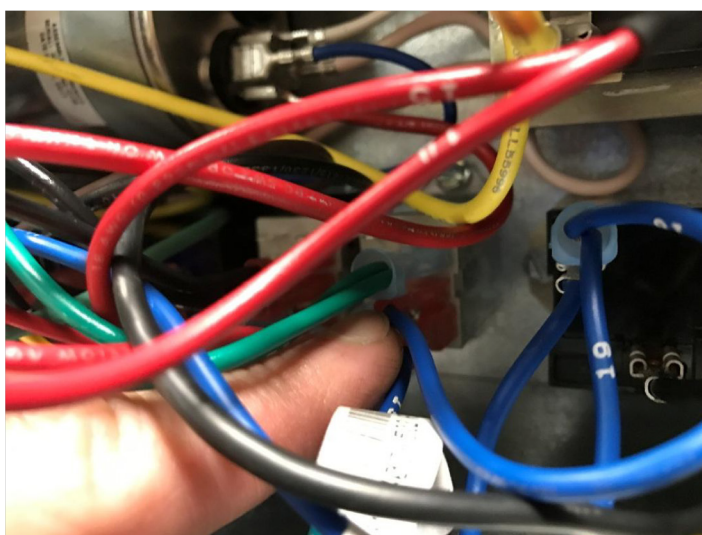
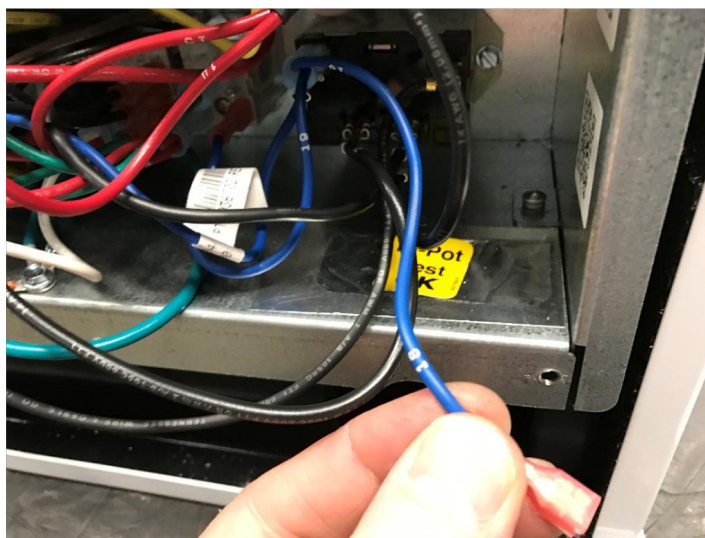


Quest Dual 105: #4032270  
Quest Dual 155: #4031490  
Quest Dual 155 - 50hz: #4037400-XX  
Quest Dual 165: #4037410  
Quest Dual 205: #4033060  
Quest Dual 225: #4035400

1. Remove the (4) 5/16" hex screws from the control access panel and remove panel.
2. Locate and unplug the Blue (#18) wire from the clear isolation relay located next to the compressor relay.

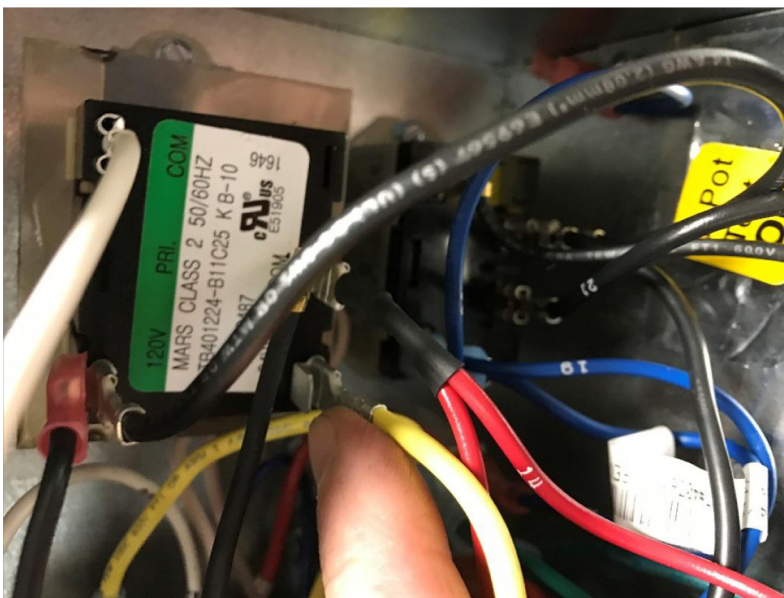


3. Using the 3/16" male terminal connector provided in the rewire kit, plug that into the female terminal connector on the Blue (#18) wire and place wire back into control box so that it will not interfere with any control operation \*NOTE: THIS WIRE WILL NOT LONGER BE NEEDED FOR UNIT OPERATION\*





4. Locate the Yellow wire installed on the 24 volt (power) side of the transformer.  
Note: The terminal connector plugged into the transformer has a ¼" male spade available to install another terminal connector.



5. Using the new black wire provided in the rewire kit, install the ¼" female connector (with piggy-back male connector) on the ¼" male terminal on Yellow wire on transformer.



6. Last, install the 3/16" female terminal connector from black wire provided to the same terminal on the isolation relay where you removed the Blue (#18) wire in step #2. Reinstall front access panel and verify unit operation.

Have Questions? Contact the Quest service department at **877-420-1330** or **[service@questclimate.com](mailto:service@questclimate.com)**